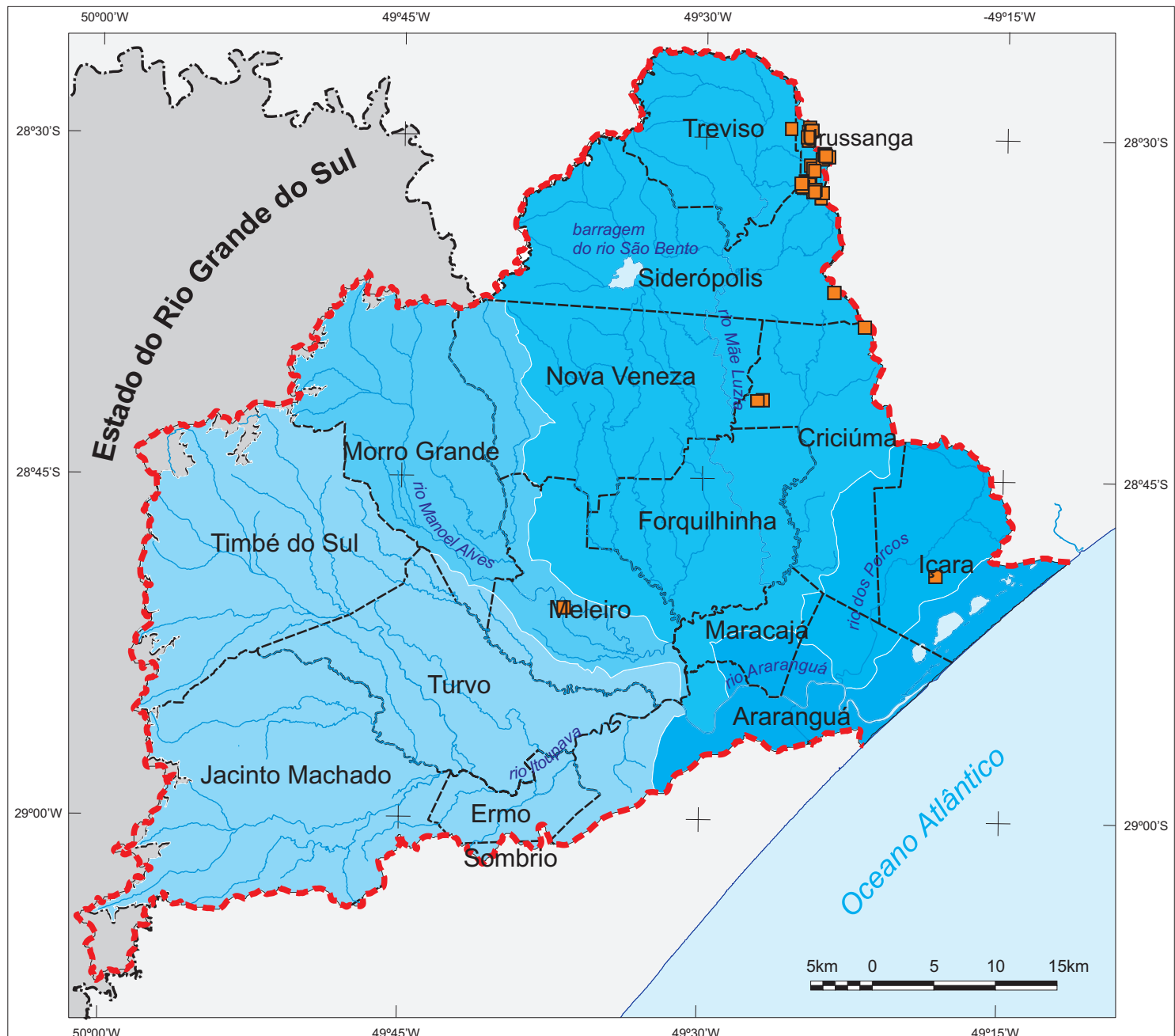




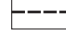


# Bacia do rio Araranguá

## Cadastro de captação: outros usos



**LEGENDA:**

 limite da bacia	<b>Sub-bacias</b>	<b>Ponto de Captação</b>
 bacia limítrofe	 rio Araranguá	 
 lagoa e barragem	 rio dos Porcos	
 rio principal	 rio Mãe Luzia	
 limite estadual	 rio Manoel Alves	
 limite municipal no interior da bacia	 rio Itoupava	

FONTE: Secretaria de Estado do Desenvolvimento Econômico Sustentável

ORGANIZAÇÃO E DESENHO: Geóg. Maurício Pamplona.

Realização

Apoio

Patrocínio

